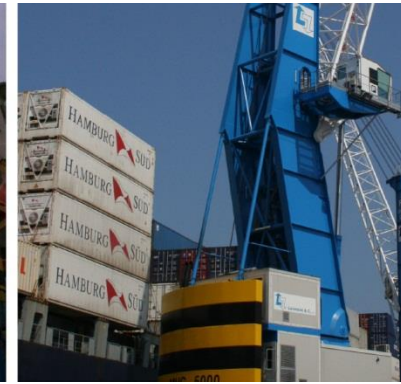


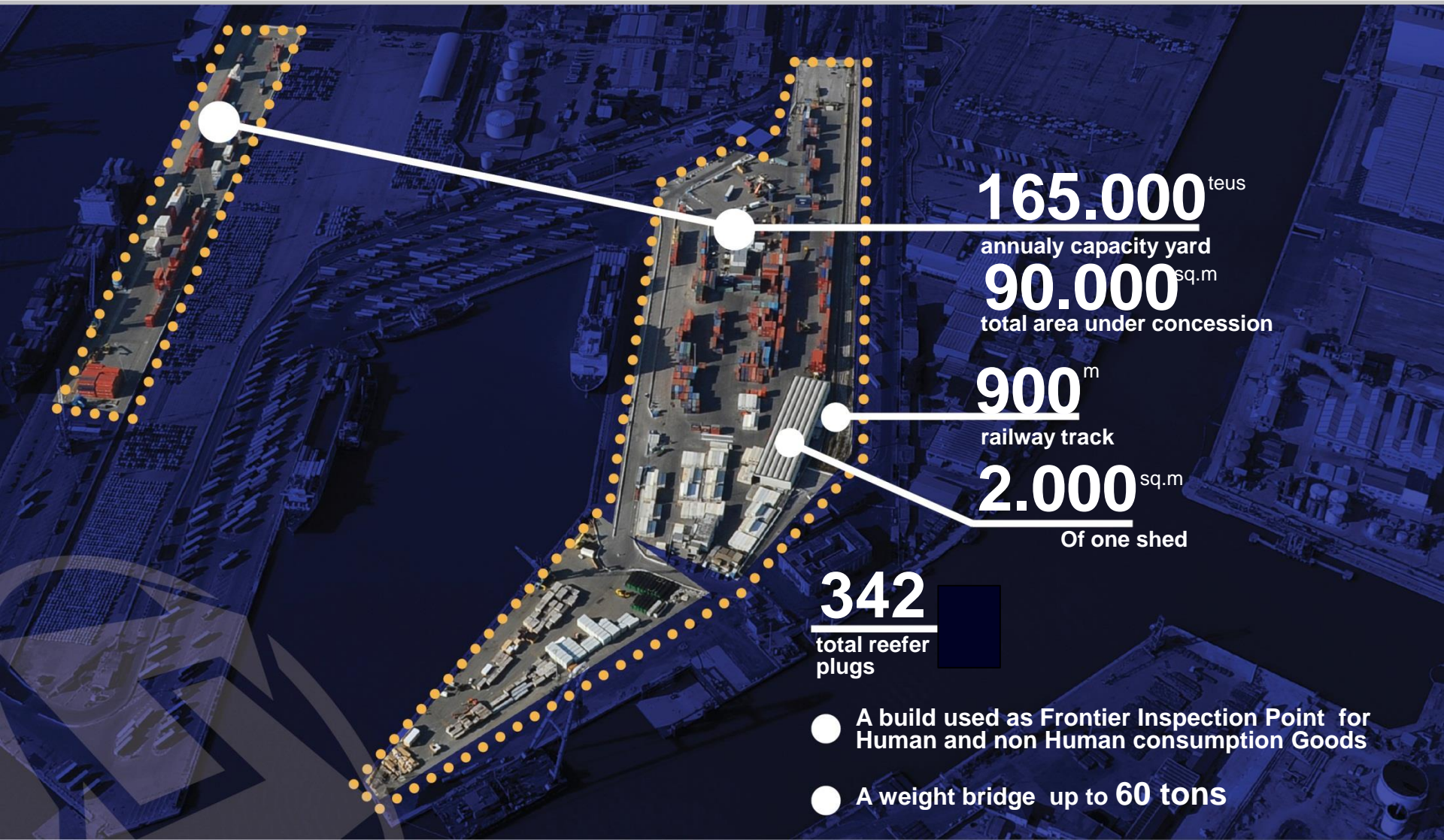
Company Profile



- History
- Terminal Features
- Berth
- Terminal Equipments
- Computerize System
- Activities and Personnel Training
- Security
- Directions
- Reference
- Contact



The **Lorenzini Company & C**, is located in Livorno – Italy- Via Labrone, 19. The Terminal is leader in the industry of dock services, haulage and logistic within the Livorno Port. The Company has been created on 1979 and thanks to a remarkable and constant investments on advanced equipments and technologies and skilled personnel, costantly grown during this years with an increase of dedicated areas from the initials 1.000 sqm on 1985 up to the actual 90.000 sqm. National and International Shipping Companies and Owners, are applying to our Company confident of high professional answers to their needs, One of our «motto» is **We believe in our mission, we love our work**



165.000 ^{teus}

annual capacity yard

90.000 ^{sq.m}

total area under concession

900 ^m

railway track

2.000 ^{sq.m}

Of one shed

342

total reefer
plugs

- A build used as Frontier Inspection Point for Human and non Human consumption Goods
- A weight bridge up to 60 tons

Terminal Features

Calata Lucca, Sponda est:

Berth n. 15 A, length m.240 maximum draft m. -12.

Berth n. 15 B, length m.240 maximum draft m. -12.



n° 2 transport operating

n° 8 Fork Lift lifting capacity 4 tons

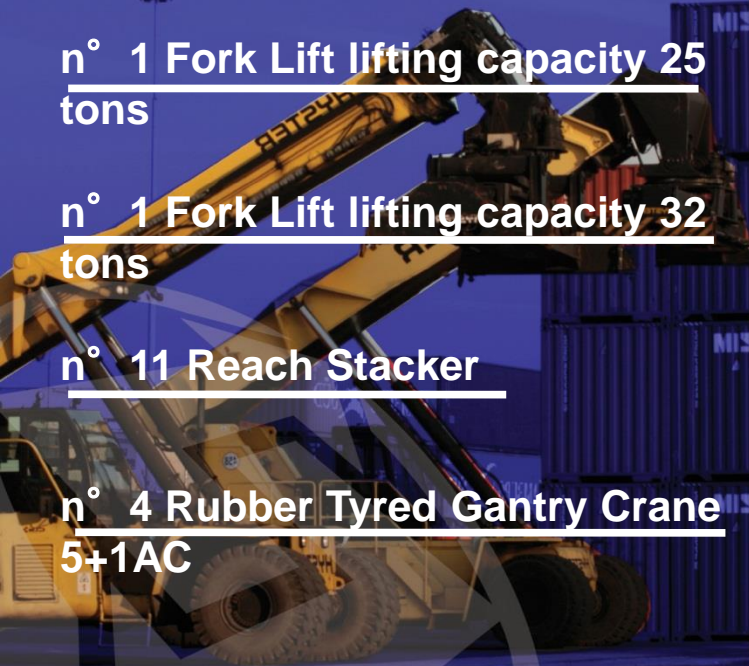
n° 4 Fork Lift lifting capacity 16 tons

n° 1 Fork Lift lifting capacity 25 tons

n° 1 Fork Lift lifting capacity 32 tons

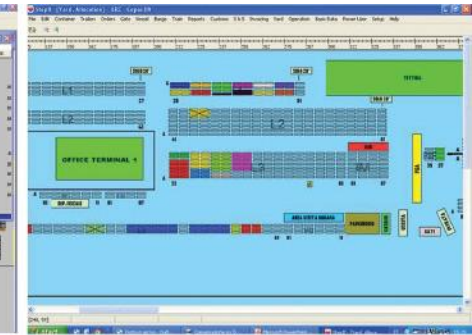
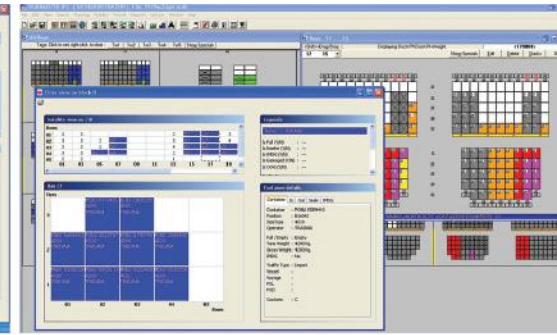
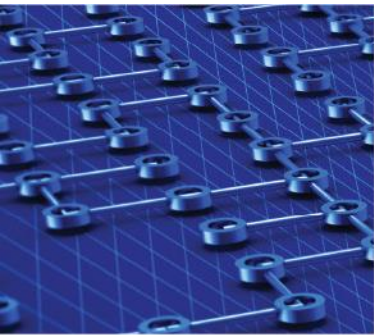
n° 11 Reach Stacker

n° 4 Rubber Tyred Gantry Crane 5+1AC



n° 2	Gottwald	HMK 300
n° 1	Fantuzzi	Reggiane MHC 115
n° 2	Gottwald	HMK 7608
n° 1	Gottwald	HMK 7408





For operational management, administration, accounting and communications the company uses a specific computerized software system.

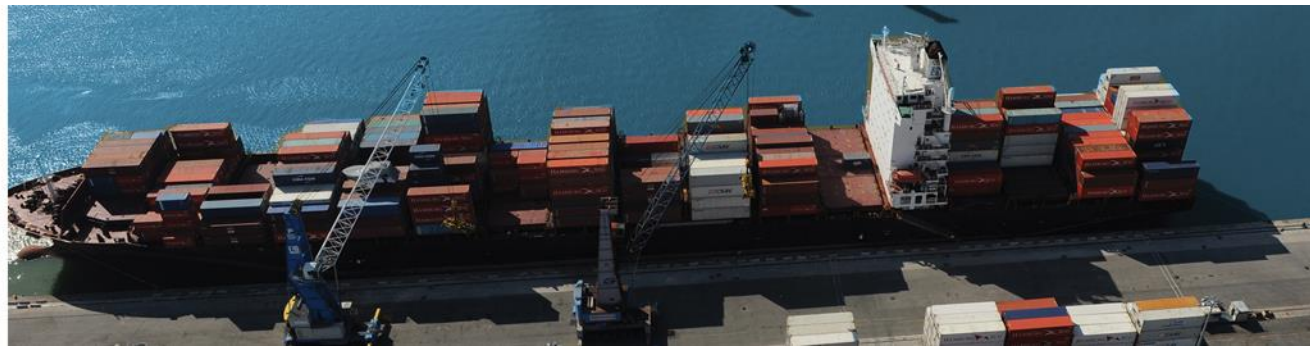
Applying the most sophisticated computer technologies, our qualified staff monitor and constantly update the system in line with expanded services for both clients and the company.

Messages used by the terminal are in an international standard form (un/edifact) and data exchanges are performed according to international standards, based on United Nations Economic Commission for Europe (UN/ECE) directives. Standard messages managed by the terminal are:

- Vessel form: BAPLIE
- Terminal form: CODECO
- COARRI

Technology help the research of quality





The **Lorenzini Company & C srl**, is licensee under the art.18 of the law 84/94 and perform the activity of loading/unloading contractor in accordance of art.16 of the above mentioned law.

The Company services are offered **24 hrs per days** allowing the fast and efficient performance of duties regarding the loading/unloading of your precious goods.

The Company firmly believe that, to guarantee the much highest quality service human resources are essentials, for this reason periodically the company personnel follow specific training courses to be prepared as much as we can to the newest competition.

Believe in what you do and do it as better as you can.



IT AEOF 12 0651



ISPS CODE

The **Lorenzini Terminal** adopted a full and integrated safety and security policy, adopting a management systems as per OHSAS 18001, ISPS and ISO 9001 standards.

In accordance to the above policy, the terminal take care of safety and security of all own employees and also of the all peoples which for any purpose are operating or entering inside the terminal areas, endeavouring to eliminate all risks and whenever not possible, to reduce the same.

To reach such goal the **Lorenzini Terminal**:

- Organized the structure with duties and responsibility well definite
- Provided with procedures and work instructions including the safety ones
- Performed the risk evaluation as per D:L. 81/08 and provided with emergency plan

Furthermore the Terminal is subject to ISPS security rules.

The Livorno port and and Darsena Uno gates control are managed by the Livorno Port Authority which release the proper port entry permits in accordance with rules inserted on ordinances n.96 dated 14.02.2003 and n.7 dated 07.04.2005.

ISPS





- CmaCgm
- Msc
- Maersk
- Tenaris / Dalmine
- Marfret
- Hamburg Sud
- General Electric
- Zim
- Hapag-Lloyd
- Saima Avandero
- Combi Lift
- BBC Chartering
- Hansa Heavy Lift
- MGM lines
- Thorco Shipping
- Big Lift
- Sal Heavy Lift



Terminal Timetable

Ship Operations:

7 days per week - 24 hours per day

On the basis of the following shifts:

1st Shifts 7.30 - 13.30

2nd Shifts 13.30 - 19.30

3rd Shifts 19.30 - 01.30

4th Shifts 01.30 - 07.30

Gate Timetable:

From Monday to Friday: 7.30 - 19.30

Saturday: 7.30-13.30

Sunday: Closed

Lorenzini & C. Srl

Livorno 57123 (Italy)

Porto Industriale - Calata Addis Abeba

Tel. +39 0586 2071 - Fax +39 0586 405199

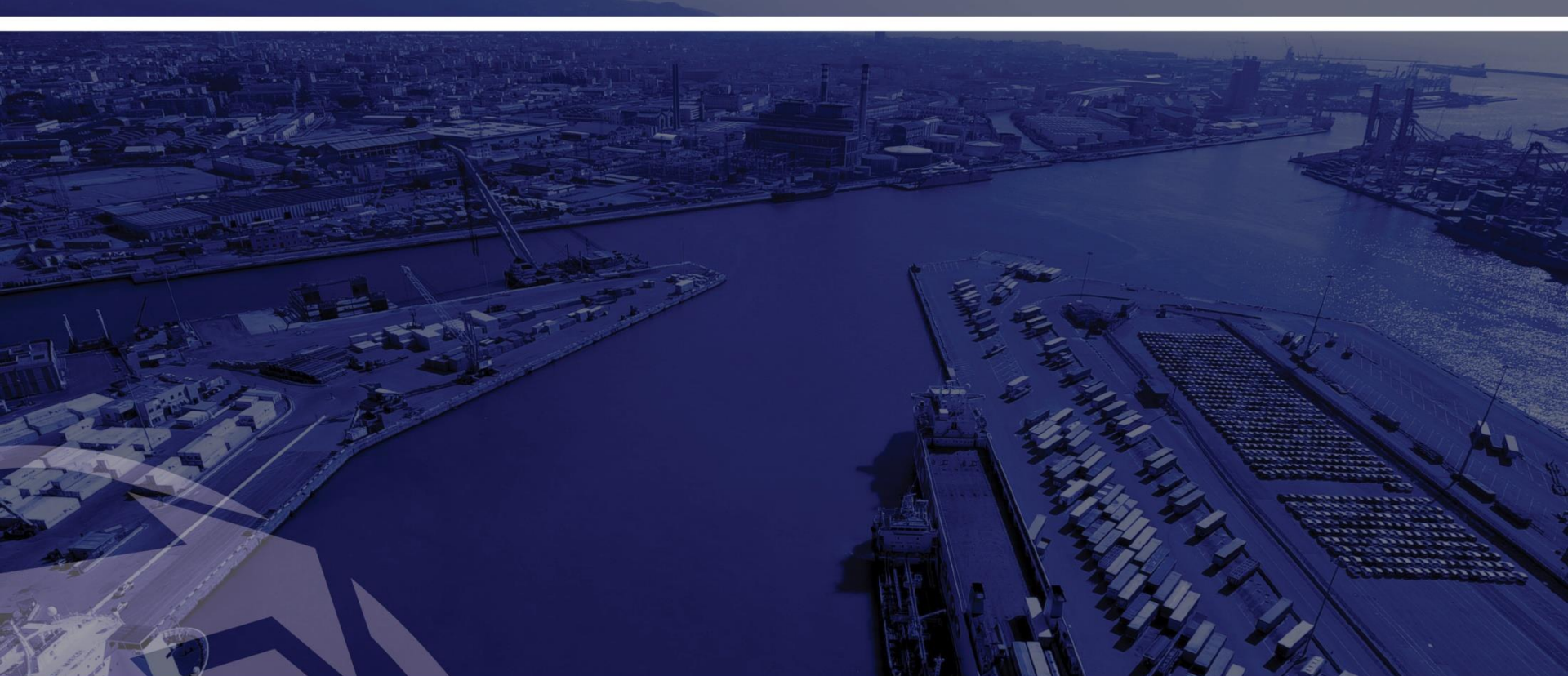
Terminal Containers:

Tel. +39 0586 207315 - Fax +39 0586 207316

info@lorenziniterminal.it

www.lorenziniterminal.it





www.lorenziniterminal.it